



16 September 2016

**HIGH GRADE NEODYMIUM/PRASEODYMIUM  
INTERSECTED IN INFILL DRILLING AT FRASER'S DEPOSIT**

**HIGHLIGHTS**

**Fraser's Infill Drilling:**

- **Infill drilling at the north-eastern extension of Fraser's Deposit returned high grade intersections including:-**
  - 6m (40-46m) at 3.04%TREO incl 1.30%Nd<sub>2</sub>O<sub>3</sub>+Pr<sub>2</sub>O<sub>3</sub>**
  - 7m (37-44m) at 2.93%TREO incl 1.24%Nd<sub>2</sub>O<sub>3</sub>+Pr<sub>2</sub>O<sub>3</sub>**
  - 6m (45-51m) at 2.75%TREO incl 0.64%Nd<sub>2</sub>O<sub>3</sub>+Pr<sub>2</sub>O<sub>3</sub>**
  - 11m (42-52m) at 1.82%TREO incl 0.79%Nd<sub>2</sub>O<sub>3</sub>+Pr<sub>2</sub>O<sub>3</sub>, and**
  - 5m (50-55m) at 2.54%TREO incl 1.11%Nd<sub>2</sub>O<sub>3</sub>+Pr<sub>2</sub>O<sub>3</sub>**

**Ultra low level aeromagnetic/radiometric survey:**

- **Interpretation is nearing completion**
- **Numerous new targets identified for investigation**

**Corporate**

- **The Company has received a research and development tax offset rebate of \$746,100 with a further \$52,000 to follow.**

**SUMMARY**

The Board of Hastings Technology Metals Limited [ASX:HAS] (Hastings or the Company) is pleased to announce that the first assay results from the infill drilling programme at Fraser's deposit within the Yangibana Project have exceeded expectations. Results indicate that grades in the north-eastern portion of the deposit are higher than those used in the current JORC resource estimation. Results also support the current interpretation of the mineralisation.

Results from additional infill holes are expected shortly.

With the completion of the programme at Fraser's, the drill rig was relocated to the Fraser's South-West area where a number of targets identified by the Company early in 2016 are being tested to increase

Hastings Technology Metals Limited

ABN 43 122 911 399

ASX Code: Shares - HAS

Level 25, 31 Market Street

Sydney NSW 2000

PO Box Q128 Queen Victoria  
Building NSW 1220 Australia

Telephone: +61 2 8268 8689

Facsimile: +61 2 8268 8699

info@hastingstechmetals.com

**Board**

Charles Lew (Executive Chairman)

Anthony Ho (Non-Exec Director)

Malcolm Mason (Non-Exec Director)

Jean Claude Steinmetz (Non-Exec  
Director)

www.hastingstechmetals.com

resources in the Eastern Belt at Yangibana beyond the current figures shown in Table 1.

The rig is currently testing the Auer prospect, being the major north-northeast trending structure shown in Figure 2 in the Company’s ASX release dated 4<sup>th</sup> July 2016.

Deposit	Resource Category	Tonnes	%TREO	including %Nd <sub>2</sub> O <sub>3</sub> +Pr <sub>2</sub> O <sub>3</sub>	%(Nd <sub>2</sub> O <sub>3</sub> +Pr <sub>2</sub> O <sub>3</sub> )/TREO
Bald Hill South	Indicated	3,298,000	0.85	0.34	40
	Inferred	836,000	0.69	0.29	42
Fraser’s	Indicated	630,000	0.95	0.43	45
	Inferred	541,000	0.59	0.26	44

Table 1 – Yangibana Project – Eastern Belt JORC Resources October 2015

### FRASER’S DEPOSIT INFILL DRILLING

The Company has completed its infill drilling programme at the Fraser’s deposit within the Company’s Yangibana Project (Figure 1). Initial results from the north-eastern extension of the main deposit are significantly higher grade than those from previous drilling in this area.

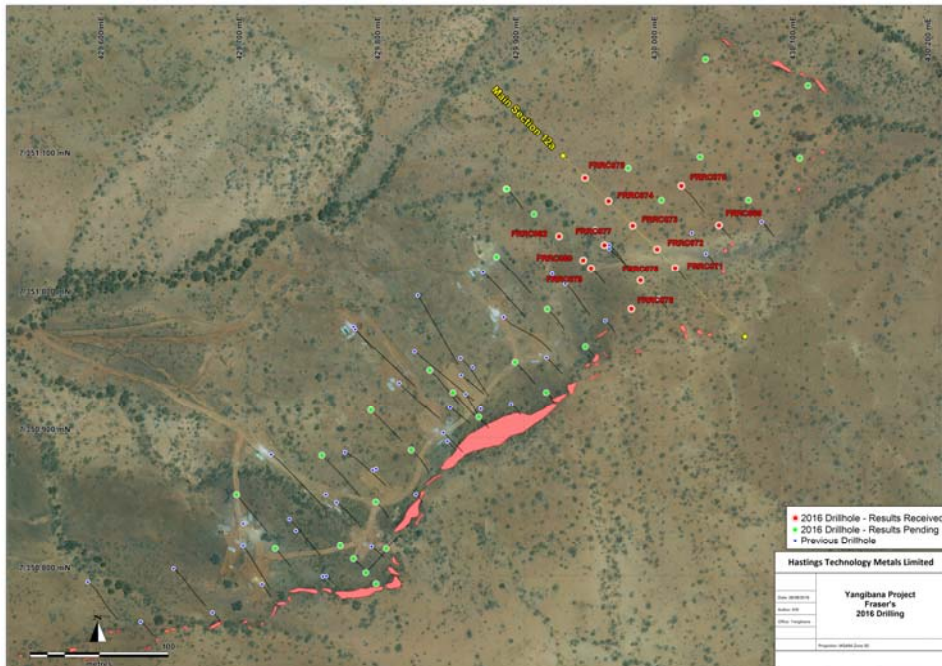


Figure 1 - Yangibana Project – Fraser’s Deposit, 2016 Drilling

Best intersections achieved in the drilling for which assays are available are shown in Table 2.

Figure 2 provides a cross-section (position of section shown in Figure 1) of the mineralisation in this portion of the deposit.

Hole No (FRRC)	From	To	Interval	%TREO	%(Nd <sub>2</sub> O <sub>3</sub> +Pr <sub>2</sub> O <sub>3</sub> )	%(Nd <sub>2</sub> O <sub>3</sub> +Pr <sub>2</sub> O <sub>3</sub> )/TREO
69	15	20	5	1.99	0.88	44
70	40	46	6	3.04	1.34	44
71	15	21	6	1.74	0.69	39
72	24	34	10	1.10	0.44	40
73	37	44	7	2.93	1.24	42
74	45	51	6	2.75	0.64	23
75	46	49	3	1.05	0.47	44
76	11	22	11	1.82	0.79	43
77	39	42	3	0.89	0.36	41
78	7	13	6	0.73	0.31	42
79	21	27	6	0.89	0.43	48
80	39	45	6	1.37	0.59	43
82	50	55	5	2.54	1.11	44

Table 2 – Yangibana Project – Fraser’s Deposit, 2016 Infill Drilling Programme, Best intersections to date

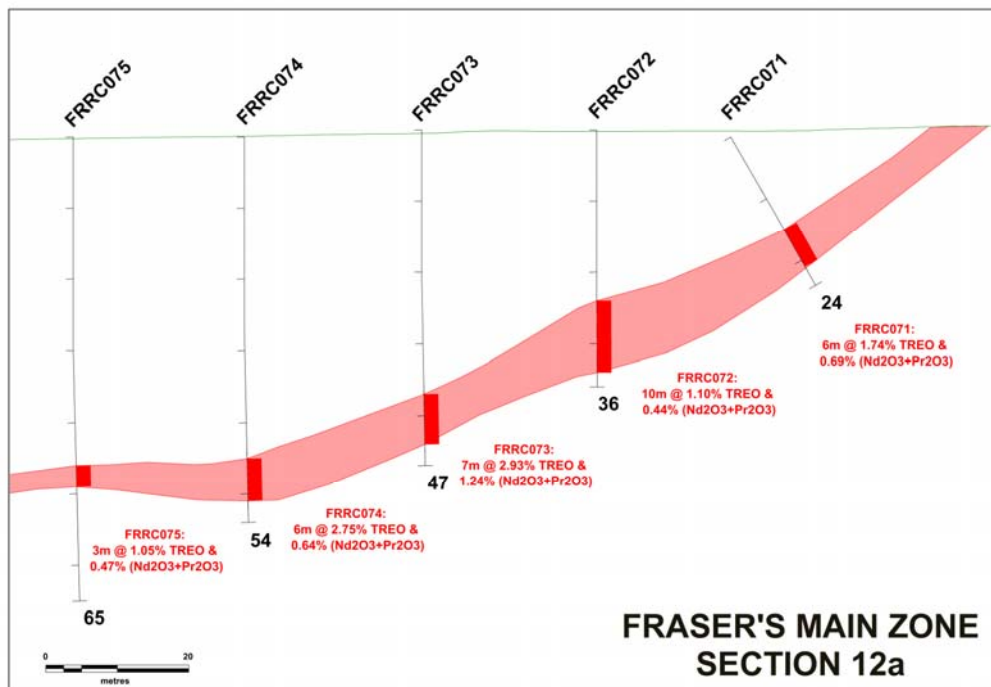


Figure 2 - Yangibana Project – Fraser’s Deposit, Cross Section 12A showing recent drill intersections

Collar coordinates for these holes are provided in Appendix 1.

These grades are generally higher than the current Indicated JORC Resources at Fraser’s as shown in Table 1.

## **TERMINOLOGY USED IN THIS REPORT**

**TREO** is the sum of the oxides of the rare earth elements lanthanum (La), cerium (Ce), praseodymium (Pr), neodymium (Nd), and samarium (Sm), europium (Eu), gadolinium (Gd), terbium (Tb), dysprosium (Dy), holmium (Ho), erbium (Er), thulium (Tm), ytterbium (Yb), lutetium (Lu), and yttrium (Y).

## **CORPORATE**

The Company has recently received a research and development tax offset rebate of \$746,100 in respect of the Yangibana project in respect of the 2015 income tax year. A further \$52,000 is anticipated in respect of the Brockman project for the 2015 income tax year.

A further claim will be made for the research and development tax offset in respect of the 2016 income tax year and is in the process of being compiled.

**For further information please contact:**

Andy Border, General Manager Exploration, +61 2 9078 7674  
Charles Tan, Chief Operations Officer, +61 2 9078 7674

**About Hastings Technology Metals**

- Hastings Technology Metals is a leading Australian rare earths company, with two rare earths projects hosting JORC-compliant resources in Western Australia.
- The Yangibana Project hosts JORC Indicated and Inferred Resources totalling 12.36 million tonnes at 1.10% TREO, including 0.35% Nd<sub>2</sub>O<sub>3</sub>+Pr<sub>2</sub>O<sub>3</sub>, comprising 8.13 million tonnes at 1.11% TREO Indicated Resources and 4.24 million tonnes at 1.09% TREO in Inferred Resources).
- The Brockman deposit contains JORC Indicated and Inferred Resources totalling 41.4 million tonnes (comprising 32.3mt Indicated Resources and 9.1mt Inferred Resources) at 0.21% TREO, including 0.18% HREO, plus 0.36% Nb<sub>2</sub>O<sub>5</sub> and 0.90% ZrO<sub>2</sub>.
- Rare earths are critical to a wide variety of current and new technologies, including smart phones, hybrid cars, wind turbines and energy efficient light bulbs.
- The Company aims to capitalise on the strong demand for critical rare earths created by expanding new technologies.

**Competent Persons' Statement**

*The information in this announcement that relates to Resources is based on information compiled by Simon Coxhell. Simon Coxhell is a consultant to the Company and a member of the Australasian Institute of Mining and Metallurgy. The information in this announcement that relates to Exploration Results is based on information compiled by Andy Border, an employee of the Company and a member of the Australasian Institute of Mining and Metallurgy.*

*Each has sufficient experience relevant to the styles of mineralisation and types of deposits which are covered in this announcement and to the activity which they are undertaking to qualify as a Competent Person as defined in the 2012 edition of the 'Australasian Code for Reporting of Exploration Results, Mineral Resources and Ore Reserves' ("JORC Code"). Each consents to the inclusion in this announcement of the matters based on his information in the form and context in which it appears.*

Appendix 1

FRRC069	430041	7351054	350	-60	135	27
FRRC070	430014	7351082	351	-60	135	50
FRRC071	430009	7351023	350	-60	135	24
FRRC072	429996	7351037	351	-90	0	36
FRRC073	429978	7351054	351	-90	0	47
FRRC074	429961	7351071	350	-90	0	54
FRRC075	429944	7351088	350	-90	0	65
FRRC076	429984	7351014	351	-90	0	24
FRRC077	429958	7351040	350	-90	0	48
FRRC078	429977	7350993	352	-90	0	18
FRRC079	429948	7351023	351	-60	135	30
FRRC080	429943	7351029	350	-90	0	48
FRRC082	429925	7351046	350	-90	0	60

JORC Code, 2012 Edition – Table 1

Section 1 Sampling Techniques and Data

(Criteria in this section apply to all succeeding sections.)

Criteria	JORC Code explanation	Commentary
<b>Sampling techniques</b>	<ul style="list-style-type: none"> <li>Nature and quality of sampling (eg cut channels, random chips, or specific specialised industry standard measurement tools appropriate to the minerals under investigation, such as down hole gamma sondes, or handheld XRF instruments, etc). These examples should not be taken as limiting the broad meaning of sampling.</li> <li>Include reference to measures taken to ensure sample representivity and the appropriate calibration of any measurement tools or systems used.</li> <li>Aspects of the determination of mineralisation that are Material to the Public Report.</li> <li>In cases where 'industry standard' work has been done this would be relatively simple (eg 'reverse circulation drilling was used to obtain 1 m samples from which 3 kg was pulverised to produce a 30 g charge for fire assay'). In other cases more explanation may be required, such as where there is coarse gold that has inherent sampling problems. Unusual commodities or mineralisation types (eg submarine nodules) may warrant disclosure of detailed information.</li> </ul>	<ul style="list-style-type: none"> <li>Reverse circulation drilling was carried out to infill the previous drilling at the Fraser's JORC resources. Drill chip samples are collected from one-metre intervals from which a 2-4kg sample was collected for submission to the laboratory for analysis for rare earths, rare metals, U, Th and a range of rock-forming elements. The main aim of this programme is to provide material for a bulk composite for pilot plant test work. Mineralised zones were identified visually during geological logging in the field.</li> <li>Samples from each metre were collected in a cyclone and split using a 3 level riffle splitter. Field duplicates, blanks and Reference Standards were inserted at a rate of approximately 1 in 20.</li> <li>Limited historical drilling in the mid-1980s and more recent drilling by Hastings has established JORC Indicated and Inferred Resources at Fraser's.</li> </ul>
<b>Drilling techniques</b>	<ul style="list-style-type: none"> <li>Drill type (eg core, reverse circulation, open-hole hammer, rotary air blast, auger, Bangka, sonic, etc) and details (eg core diameter, triple or standard tube, depth of diamond tails, face-sampling bit or other type, whether core is oriented and if so, by what method, etc).</li> </ul>	<ul style="list-style-type: none"> <li>Reverse Circulation drilling at Fraser's utilised a nominal 5 1/4 inch diameter face-sampling hammer. Diamond drilling has been completed on a limited number of holes at HQ core diameter. All core has been oriented using standard methods.</li> </ul>
<b>Drill sample recovery</b>	<ul style="list-style-type: none"> <li>Method of recording and assessing core and chip sample recoveries and results assessed.</li> <li>Measures taken to maximise sample recovery and ensure representative nature of the samples.</li> <li>Whether a relationship exists between sample recovery and grade and whether sample bias may have occurred due to preferential loss/gain of fine/coarse material.</li> </ul>	<ul style="list-style-type: none"> <li>Recoveries are recorded by the geologist in the field at the time of drilling/logging.</li> <li>If poor sample recovery is encountered during drilling, the geologist and driller have endeavoured to rectify the problem to ensure maximum sample recovery. Visual assessment is made for moisture and contamination. A cyclone and splitter were used to ensure representative samples and were routinely cleaned.</li> <li>Sample recoveries to date have generally been high, and moisture in samples minimal. Insufficient data is available at present to determine if a relationship exists between recovery and grade.</li> </ul>
<b>Logging</b>	<ul style="list-style-type: none"> <li>Whether core and chip samples have been geologically and geotechnically logged to a level of detail to support appropriate Mineral Resource estimation, mining studies and metallurgical studies.</li> <li>Whether logging is qualitative or quantitative in nature. Core (or costean, channel, etc)</li> </ul>	<ul style="list-style-type: none"> <li>All drill chip samples are geologically logged at 1m intervals from surface to the bottom of each individual hole to a level that will support appropriate future Mineral Resource studies.</li> <li>Logging is considered to be semi-quantitative given the nature of reverse circulation drill chips.</li> <li>All RC drill holes in the current programme are</li> </ul>





Criteria	JORC Code explanation	Commentary
	<p>photography.</p> <ul style="list-style-type: none"> <li>The total length and percentage of the relevant intersections logged.</li> </ul>	<p>logged in full.</p>
<b>Sub-sampling techniques and sample preparation</b>	<ul style="list-style-type: none"> <li>If core, whether cut or sawn and whether quarter, half or all core taken.</li> <li>If non-core, whether riffled, tube sampled, rotary split, etc and whether sampled wet or dry.</li> <li>For all sample types, the nature, quality and appropriateness of the sample preparation technique.</li> <li>Quality control procedures adopted for all sub-sampling stages to maximise representivity of samples.</li> <li>Measures taken to ensure that the sampling is representative of the in situ material collected, including for instance results for field duplicate/second-half sampling.</li> <li>Whether sample sizes are appropriate to the grain size of the material being sampled.</li> </ul>	<ul style="list-style-type: none"> <li>The RC drilling rig is equipped with an in-built cyclone and triple tier riffle splitting system, which provided one bulk sample of approximately 25kg, and a sub-sample of 2-4kg per metre drilled.</li> <li>All samples were split using the system described above to maximise and maintain consistent representivity. The majority of samples were dry. For wet samples the cleanliness of the cyclone and splitter was constantly monitored by the geologist and maintained to avoid contamination.</li> <li>Bulk samples were placed in green plastic bags, with the sub-samples collected placed in calico sample bags.</li> <li>Field duplicates were collected directly from the splitter as drilling proceeded through a secondary sample chute. These duplicates were designed for lab checks as well as lab umpire analysis.</li> <li>A sample size of 2-4kg was collected and considered appropriate and representative for the grain size and style of mineralisation.</li> </ul>
<b>Quality of assay data and laboratory tests</b>	<ul style="list-style-type: none"> <li>The nature, quality and appropriateness of the assaying and laboratory procedures used and whether the technique is considered partial or total.</li> <li>For geophysical tools, spectrometers, handheld XRF instruments, etc, the parameters used in determining the analysis including instrument make and model, reading times, calibrations factors applied and their derivation, etc.</li> <li>Nature of quality control procedures adopted (eg standards, blanks, duplicates, external laboratory checks) and whether acceptable levels of accuracy (ie lack of bias) and precision have been established.</li> </ul>	<ul style="list-style-type: none"> <li>Genalysis (Perth) was used for all analysis work carried out on the 1m drill chip samples and the rock chip samples. The laboratory techniques below are for all samples submitted to Genalysis and are considered appropriate for the style of mineralisation defined at the Yangibana REE Project: FP6/MS</li> <li>Blind field duplicates were collected at a rate of approximately 1 duplicate for every 20 samples that are to be submitted to Genalysis for laboratory analysis. Field duplicates were split directly from the splitter as drilling proceeded at the request of the supervising geologist.</li> </ul>
<b>Verification of sampling and assaying</b>	<ul style="list-style-type: none"> <li>The verification of significant intersections by either independent or alternative company personnel.</li> <li>The use of twinned holes.</li> <li>Documentation of primary data, data entry procedures, data verification, data storage (physical and electronic) protocols.</li> <li>Discuss any adjustment to assay data.</li> </ul>	<ul style="list-style-type: none"> <li>At least two company personnel verify all significant intersections.</li> <li>All geological logging and sampling information is completed firstly on to paper logs before being transferred to Microsoft Excel spreadsheets. Physical logs and sampling data are returned to the Hastings head office for scanning and storage. Electronic copies of all information are backed up daily.</li> <li>No adjustments of assay data are considered necessary.</li> </ul>
<b>Location of data points</b>	<ul style="list-style-type: none"> <li>Accuracy and quality of surveys used to locate drill holes (collar and down-hole surveys), trenches, mine workings and other locations used in Mineral Resource estimation.</li> <li>Specification of the grid system used.</li> </ul>	<ul style="list-style-type: none"> <li>A Garmin GPSMap62 hand-held GPS is used to define the location of the drill hole collars. Standard practice is for the GPS to be left at the site of the collar for a period of 5 minutes to obtain a steady reading. Collar locations are considered</li> </ul>





Criteria	JORC Code explanation	Commentary
	<ul style="list-style-type: none"> <li>• <i>Quality and adequacy of topographic control.</i></li> </ul>	<p>to be accurate to within 5m. Collars will be picked up by DGPS in the future. Down hole surveys are conducted by the drill contractors using a Reflex electronic single-shot camera with readings for dip and magnetic azimuth nominally taken every 30m down hole, except in holes of less than 30m. The instrument is positioned within a stainless steel drill rod so as not to affect the magnetic azimuth.</p> <ul style="list-style-type: none"> <li>• Grid system used is MGA 94 (Zone 50)</li> <li>• Topographic control is based on the detailed 1m topographic survey undertaken by Hyvista Corporation in 2014.</li> </ul>
<b>Data spacing and distribution</b>	<ul style="list-style-type: none"> <li>• <i>Data spacing for reporting of Exploration Results.</i></li> <li>• <i>Whether the data spacing and distribution is sufficient to establish the degree of geological and grade continuity appropriate for the Mineral Resource and Ore Reserve estimation procedure(s) and classifications applied.</i></li> <li>• <i>Whether sample compositing has been applied.</i></li> </ul>	<ul style="list-style-type: none"> <li>• The infill drill hole spacing is 50m (or 25m on three selected sections) along drill-lines, with lines spaced between previously drilled lines at 50m intervals. Collar locations were varied slightly dependent on access at a given site.</li> <li>• Further details are provided in the collar co-ordinate table contained elsewhere in this report.</li> <li>• No sample compositing is used in this report, all results detailed are the product of 1m downhole sample intervals.</li> </ul>
<b>Orientation of data in relation to geological structure</b>	<ul style="list-style-type: none"> <li>• <i>Whether the orientation of sampling achieves unbiased sampling of possible structures and the extent to which this is known, considering the deposit type.</i></li> <li>• <i>If the relationship between the drilling orientation and the orientation of key mineralised structures is considered to have introduced a sampling bias, this should be assessed and reported if material.</i></li> </ul>	<ul style="list-style-type: none"> <li>• Most drill holes in the current programme are vertical (subject to access to the preferred collar position) and as such intersected widths do not represent true thickness.</li> </ul>
<b>Sample security</b>	<ul style="list-style-type: none"> <li>• <i>The measures taken to ensure sample security.</i></li> </ul>	<ul style="list-style-type: none"> <li>• The chain of custody is managed by the project geologist who places calico sample bags in polyweave sacks. Up to 10 calico sample bags are placed in each sack. Each sack is clearly labelled with: <ul style="list-style-type: none"> <li>• Hastings Technology Metals Ltd</li> <li>• Address of laboratory</li> <li>• Sample range</li> </ul> </li> <li>• Samples were delivered by Hastings personnel to the Nexus Logistics base in order to be loaded on the next available truck for delivery to Genalysis. The freight provider delivers the samples directly to the laboratory. Detailed records are kept of all samples that are dispatched, including details of chain of custody.</li> </ul>
<b>Audits or reviews</b>	<ul style="list-style-type: none"> <li>• <i>The results of any audits or reviews of sampling techniques and data.</i></li> </ul>	<ul style="list-style-type: none"> <li>• No audit of sampling data has been completed to date but a review will be conducted once all data from Genalysis (Perth) has been received. Data is validated when loading into the database and will be validated again prior to any Resource estimation studies.</li> </ul>



Criteria	JORC Code explanation	Commentary
----------	-----------------------	------------

## Section 2 Reporting of Exploration Results

(Criteria listed in the preceding section also apply to this section.)

Criteria	JORC Code explanation	Commentary
<b>Mineral tenement and land tenure status</b>	<ul style="list-style-type: none"> <li>Type, reference name/number, location and ownership including agreements or material issues with third parties such as joint ventures, partnerships, overriding royalties, native title interests, historical sites, wilderness or national park and environmental settings.</li> <li>The security of the tenure held at the time of reporting along with any known impediments to obtaining a licence to operate in the area.</li> </ul>	<ul style="list-style-type: none"> <li>The RC drilling at Fraser's was carried out within M09/198.</li> <li>All Yangibana tenements are in good standing and no known impediments exist.</li> </ul>
<b>Exploration done by other parties</b>	<ul style="list-style-type: none"> <li>Acknowledgment and appraisal of exploration by other parties.</li> </ul>	<ul style="list-style-type: none"> <li>Previous exploration has been carried by Hurlston in the 1980s and more recently by Hastings.</li> </ul>
<b>Geology</b>	<ul style="list-style-type: none"> <li>Deposit type, geological setting and style of mineralisation.</li> </ul>	<ul style="list-style-type: none"> <li>The Yangibana ironstones within the Yangibana Project are part of an extensive REE-mineralised system associated with the Gifford Creek Carbonatite Complex. The lenses have a total strike length of at least 12km.</li> <li>These ironstone lenses have been explored previously for base metals, manganese, uranium, diamonds and rare earths.</li> <li>The ironstones are considered by GSWA to be coeval with the numerous carbonatite sills that occur within Hastings tenements, or at least part of the same magmatic/hydrothermal system.</li> </ul>
<b>Drill hole Information</b>	<ul style="list-style-type: none"> <li>A summary of all information material to the understanding of the exploration results including a tabulation of the following information for all Material drill holes: <ul style="list-style-type: none"> <li>easting and northing of the drill hole collar</li> <li>elevation or RL (Reduced Level – elevation above sea level in metres) of the drill hole collar</li> <li>dip and azimuth of the hole</li> <li>down hole length and interception depth</li> <li>hole length.</li> </ul> </li> <li>If the exclusion of this information is justified on the basis that the information is not Material and this exclusion does not detract from the understanding of the report, the Competent Person should clearly explain why this is the case.</li> </ul>	<ul style="list-style-type: none"> <li>Refer to details of drilling in table in the body of this report and the appendices.</li> </ul>
<b>Data aggregation methods</b>	<ul style="list-style-type: none"> <li>In reporting Exploration Results, weighting averaging techniques, maximum and/or minimum grade truncations (eg cutting of high grades) and cut-off grades are usually Material and should be stated.</li> <li>Where aggregate intercepts incorporate short lengths of high grade results and longer lengths</li> </ul>	<ul style="list-style-type: none"> <li>All intervals reported are composed of 1m downhole intervals and as such are length weighted. A lower cut-off grade of 0.5%TREO has been used for assessing significant intercepts, and no upper cut-off grade was applied.</li> <li>Maximum internal dilution of 1m was incorporated</li> </ul>



Criteria	JORC Code explanation	Commentary
	<p><i>of low grade results, the procedure used for such aggregation should be stated and some typical examples of such aggregations should be shown in detail.</i></p> <ul style="list-style-type: none"> <li><i>The assumptions used for any reporting of metal equivalent values should be clearly stated.</i></li> </ul>	<p>in reported significant intercepts.</p> <p>.</p>
<b>Relationship between mineralisation widths and intercept lengths</b>	<ul style="list-style-type: none"> <li><i>These relationships are particularly important in the reporting of Exploration Results.</i></li> <li><i>If the geometry of the mineralisation with respect to the drill hole angle is known, its nature should be reported.</i></li> <li><i>If it is not known and only the down hole lengths are reported, there should be a clear statement to this effect (eg 'down hole length, true width not known').</i></li> </ul>	<ul style="list-style-type: none"> <li>True widths for mineralisation have not been calculated and as such only downhole lengths have been reported.</li> <li>It is expected that true widths will be less than downhole widths, due to the apparent dip of the mineralisation.</li> </ul>
<b>Diagrams</b>	<ul style="list-style-type: none"> <li><i>Appropriate maps and sections (with scales) and tabulations of intercepts should be included for any significant discovery being reported. These should include, but not be limited to a plan view of drill hole collar locations and appropriate sectional views.</i></li> </ul>	<ul style="list-style-type: none"> <li>Appropriate maps and sections are available in the body of this ASX announcement.</li> </ul>
<b>Balanced reporting</b>	<ul style="list-style-type: none"> <li><i>Where comprehensive reporting of all Exploration Results is not practicable, representative reporting of both low and high grades and/or widths should be practiced to avoid misleading reporting of Exploration Results.</i></li> </ul>	<ul style="list-style-type: none"> <li>Reporting of results in this report is considered balanced.</li> </ul>
<b>Other substantive exploration data</b>	<ul style="list-style-type: none"> <li><i>Other exploration data, if meaningful and material, should be reported including (but not limited to): geological observations; geophysical survey results; geochemical survey results; bulk samples – size and method of treatment; metallurgical test results; bulk density, groundwater, geotechnical and rock characteristics; potential deleterious or contaminating substances.</i></li> </ul>	<ul style="list-style-type: none"> <li>Geological mapping has continued in the vicinity of the drilling as the programme proceeds.</li> </ul>
<b>Further work</b>	<ul style="list-style-type: none"> <li><i>The nature and scale of planned further work (eg tests for lateral extensions, depth extensions or large-scale step-out drilling).</i></li> <li><i>Diagrams clearly highlighting the areas of possible extensions, including the main geological interpretations and future drilling areas, provided this information is not commercially sensitive.</i></li> </ul>	<ul style="list-style-type: none"> <li>The currently drilling programme is primarily designed to provide a large composite sample for pilot plant processing test work. Additional resources will be sought in a subsequent drilling programme to commence on completion of the infill programme.</li> </ul>